

NEROK 55/70

gerflor.com



Gerflor[®]
theflooringgroup

NEROK

COMPLETE SOLUTION FOR HIGH TRAFFIC



Nerok 55: Class 33
Nerok 70: Class 34



Available in
4 & 2m width



R10



100 % recyclable



Indoor air quality
TVOC 10 times better
than norms requirement

2013 - SHERWOOD BLOND

COMPACT - 2mm



High indentation
resistance



36 colors

ACOUSTIC - 3mm



-19dB
Comfort underfoot

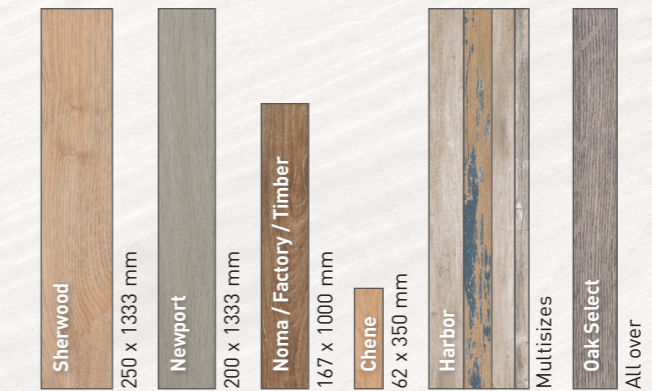


10 colors

WIDE CHOICE OF REALISTIC DESIGNS

WOOD

Realistic embossing



MINERAL 4 designs



MATT Surface

PUR+ matt

-30% brightness vs standard varnish



2013 - SHERWOOD BLOND

NEROK 55 / NEROK 70



25x133,3 cm

2012 - SHERWOOD CLEAR



6,2x35 cm

0669 - CHENE LIGHT



16,7x100 cm

1518 - FACTORY WHITE

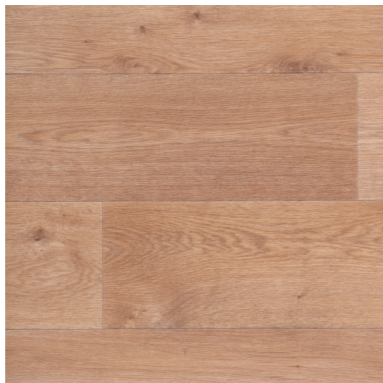


20x133,3 cm

2244 - NEWPORT CLEAR



NOMA KOLA



16,7x100 cm

0720 - TIMBER CLEAR



25x133,3 cm

2013 - SHERWOOD BLOND



20x133,3 cm

2245 - NEWPORT NATURAL



16,7x100 cm

1451 - NOMA KOLA



HARBOR BLUE



16,7x100 cm

0476 - NOMA MIEL



Multisizes

1893 - HARBOR BLUE



2242 - OAK SELECT COUNTRY



16,7x100 cm

0492 - TIMBER CABANA



25x133,3 cm

2015 - SHERWOOD BROWN



25x133,3 cm

2017 - SHERWOOD GREY



16,7x100 cm

1751 - TIMBER GREY



1430 - OAK SELECT DARK GREY



All colors in Compact version are available in Nerok 55 & Nerok 70.
All colors in Acoustic version are available in Nerok 55 Acoustic & Nerok 70 Acoustic.

To validate your choice, order a 16x24 cm sample: www.gerflor.com

NEROK 55 / NEROK 70




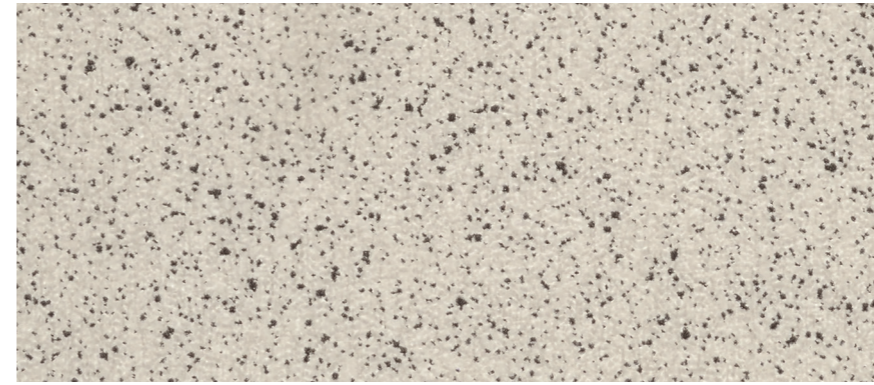
2151 - SHADE LIGHT GREY 



2131 - LEONE MOUSE 



2135 - LEONE CREAM 



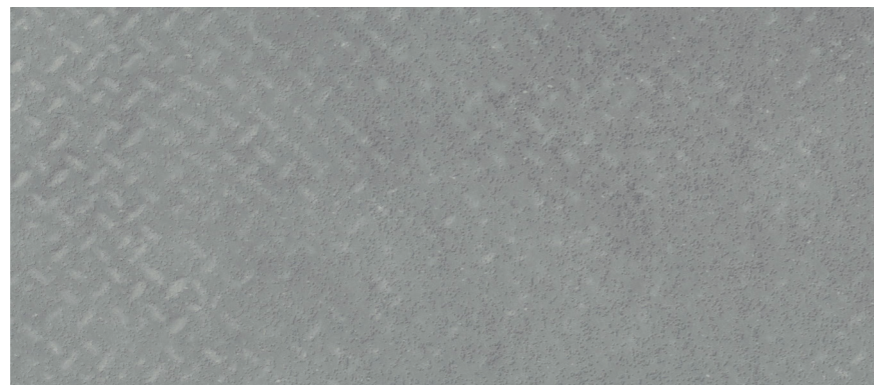
2175 - PIXEL CLEAR 



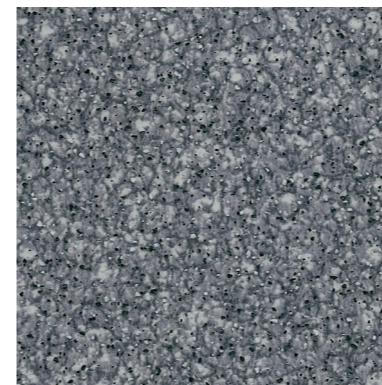
2176 - PIXEL TAUPE 



2249 - BROOKLYN BLUE 



2253 - BROOKLYN SILVER 



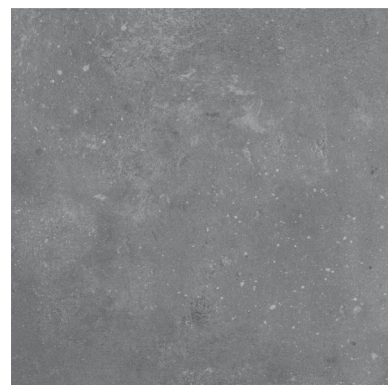
0632 - PIXEL ANTHRACITE 



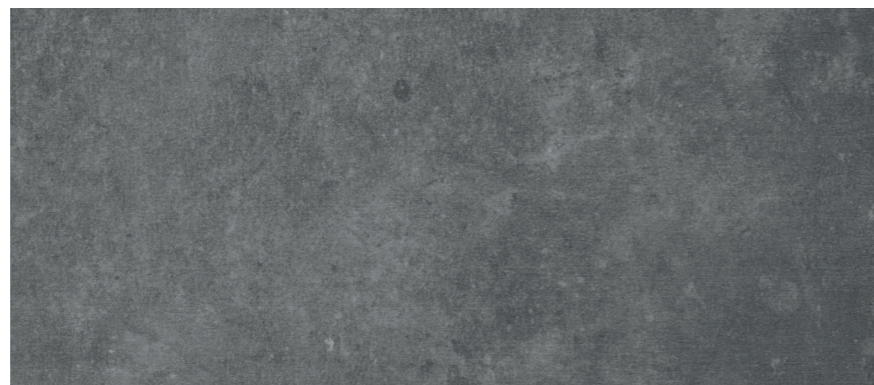
0597 - PIXEL SILVER 



0639 - PIXEL SAND 



2132 - LEONE METAL 



2133 - LEONE ANTHRACITE 



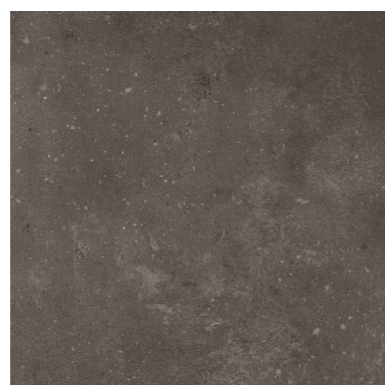
0621 - PIXEL VANILLA 



2178 - PIXEL PAPRIKA 



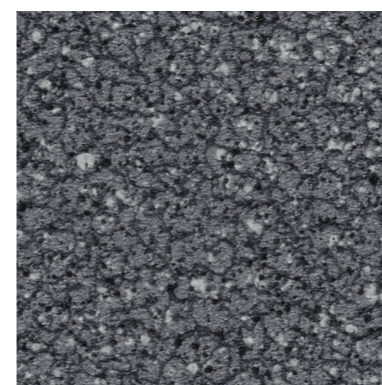
2152 - SHADE GREY 



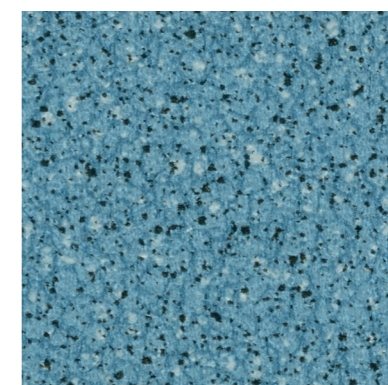
2134 - LEONE BROWN 



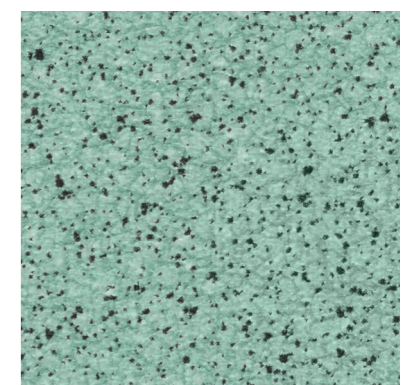
2153 - SHADE ANTHRACITE 



2179 - PIXEL BLACK 



2182 - PIXEL OCEAN 



2181 - PIXEL MEADOW 



Z0013919

			NEROK 55	NEROK 55 ACOUSTIC	NEROK 70	NEROK 70 ACOUSTIC
--	--	--	----------	-------------------	----------	-------------------

DESCRIPTION

Total Thickness	EN ISO 24346	mm	2.00	3.35	2.00	3.45
Thickness of the wearlayer	EN ISO 24340	mm	0.55	0.55	0.70	0.70
Weight	EN ISO 23997	g/m ²	2560	2400	2670	2500
Width of sheet	EN ISO 24341	cm	200 /400	200 /400	200 /400	200 /400
Length of sheet	EN ISO 24341	m	20	20	20	20

CLASSIFICATION

Norm/Product Specification	-	-	EN ISO 10582	EN 651	EN ISO 10582	EN 651
European Classification	EN ISO 10874	Class	33-42	33-42	34-43	34-42
Fire Rating	EN 13501-1	Class	Bfl-s1	Bfl-s1	Bfl-s1	Bfl-s1
Static Electrical Propensity	EN 1815	kV	< 2	< 2	< 2	< 2
Slip Resistance Wet	DIN 51 130	Class	R10	R10	R10	R10

PERFORMANCES

Wear Resistance	EN 660.2	mm ³	≤ 2.0	≤ 2.0	≤ 2.0	≤ 2.0
Wear Group	QB 30	group	T	T	T	T
Type Binder content	EN ISO 10582	type	I	-	I	-
Dimensional stability (norm)	EN ISO 23999	%	≤ 0.40	≤ 0.40	≤ 0.40	≤ 0.40
Residual Indentation	EN ISO 24343-1	mm	≤ 0.10	≤ 0.20	≤ 0.10	≤ 0.20
Residual Indentation (average measured value)	-	mm	≈ 0.05	≈ 0.10	≈ 0.05	≈ 0.10
Impact sound insulation	EN ISO 717-2	dB	6	19	6	19
Castor chair test (type H)	ISO 4918	-	OK	OK	OK	OK
Thermal Conductivity	EN ISO 10456	W/(m.k)	0.25	0.25	0.25	0.25
Colour Fastness	EN 20 105 - B02	degree	≥ 6	≥ 6	≥ 6	≥ 6
Surface Treatment	-	-	PUR+	PUR+	PUR+	PUR+
Chemical Products Resistance ⁽¹⁾	EN ISO 26987	-	OK	OK	OK	OK

ENVIRONMENT/INDOOR AIR QUALITY

TVOC after 28 days	ISO 16000-6	micrograms/m ³	<100	<100	<100	<100
Certification	-	-	Floorscore®	Floorscore®	Floorscore®	Floorscore®

CE MARKING

	EN 14041	   
--	----------	--

⁽¹⁾ Regarding the resistance to chemicals, please download the corresponding leaflet from our website.



The information contained in this document is valid from 01/02/2022 and is subject to change at any time without notice. In the context of constantly changing technology, our customers are responsible, prior to any use, for checking with us that this document is the version in force. Rubber leaves indelible stains on vinyl floorings: do not use mats with rubber backing and replace tubular furniture feet with those made of PVC or polyamide. Place mats of sufficient length at entrances to reduce outside sources of dirt.

We care / we act Our Commitments for a Sustainable future


CARBON FOOTPRINT*
 -20 % kg CO₂ equivalent/m² between 2020 and 2025


BIOSOURCED CONTENT***
 10 % by 2025


RECYCLED CONTENT
 30 % by 2025


ADHESIVE FREE**
 35 % by 2025


ANNUAL VOLUME RECYCLED
 60 000 t by 2025

Gerflor®

* Scopes 1 and 2 defined in the GHG protocol *** % of activity with biosourced materials ** % of activity - adhesive free solution